

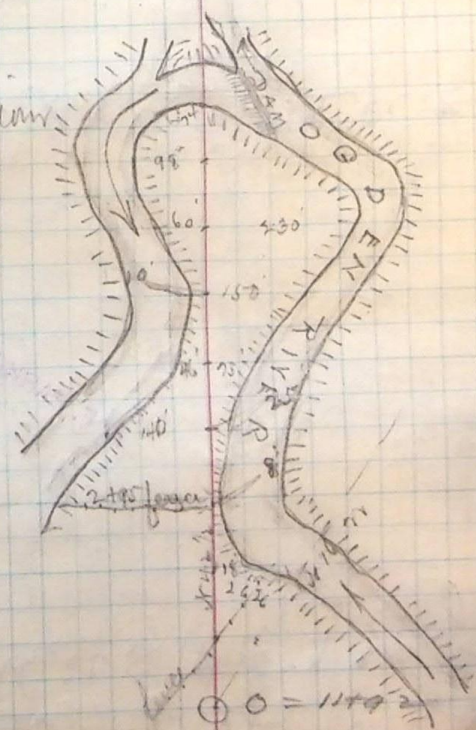
A. F. PARKER.

A. F. PARKER.

see page 19

Book up to sta 0 - 11 + 92

S Bank of the River



"A" line

14  
8  
7  
6  
5  
4  
3  
2  
1  
0

Cal Course  $S 64^{\circ} 32' W$   
 $\odot = 11 + 92$  26' 26" In left of  $42 \frac{1}{2}$  W = "A" line

B.S. on Sta 0 = 45 + 92 2' of line  
BASE  $N 89^{\circ} 02' W$